

FIG. "A" - CLEAR OPENING

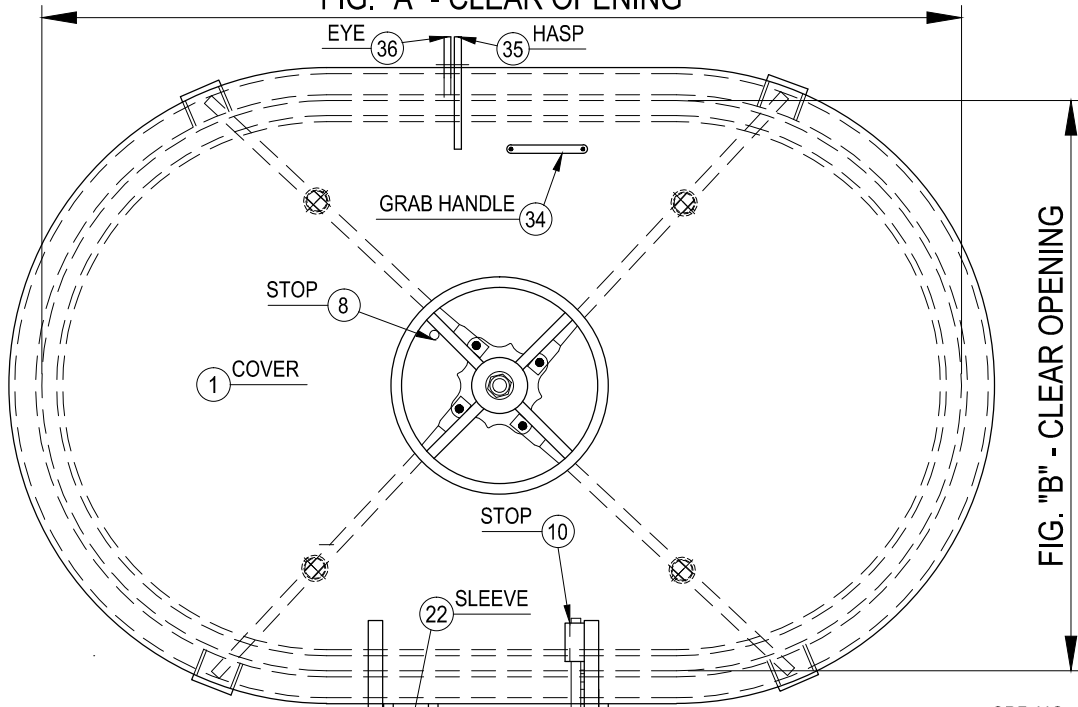
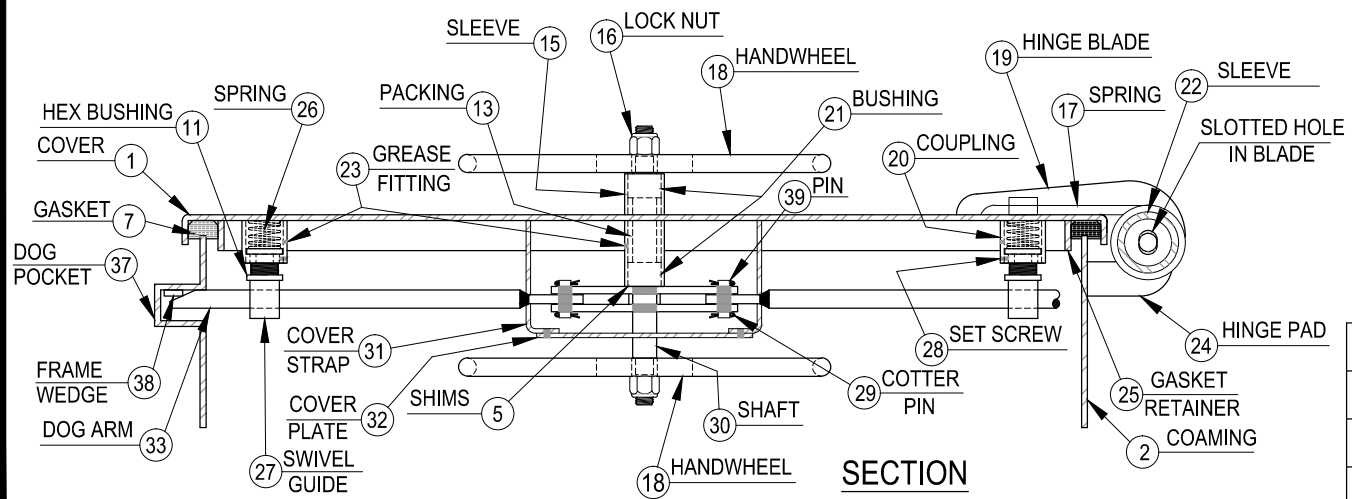
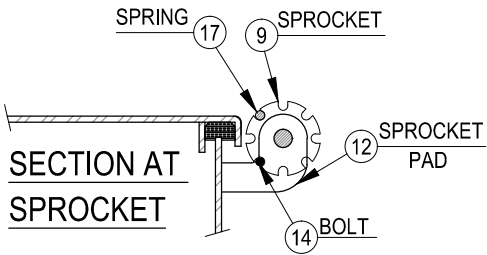
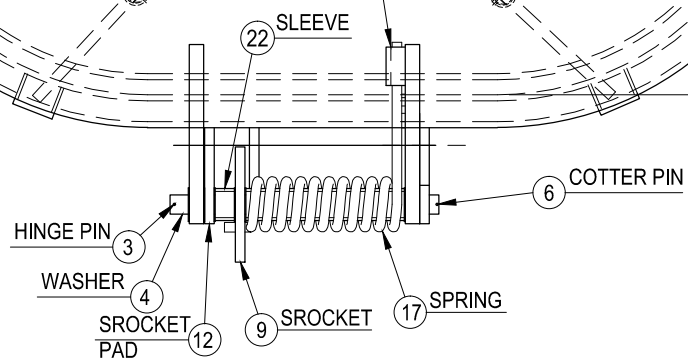


FIG. "B" - CLEAR OPENING



SCHEDULE OF MATERIALS

PC.	MATERIAL	REMARKS
1	MILD STEEL	
2	MILD STEEL	
3	COLD FINISH	
4	STAINLESS	
5	STAINLESS	
6	STAINLESS	
7	NEOPRENE	
8	MILD STEEL	
9	MILD STEEL	
10	MILD STEEL	
11	BRASS	
12	MILD STEEL	
13	TEFLON	
14	PLATED STEEL	
15	STEEL	
16	PLATED STEEL	
17	STAINLESS	
18	MILD STEEL	
19	MILD STEEL	
20	STEEL	
21	DELTRIN	
22	STEEL	
23	PLATED STEEL	
24	MILD STEEL	
25	MILD STEEL	
26	SPRING STEEL	
27	BRASS	
28	PLATED STEEL	
29	STAINLESS	
30	COLD FINISH	
31	MILD STEEL	
32	MILD STEEL	
33	COLD FINISH	
34	MILD STEEL	
35	MILD STEEL	
36	MILD STEEL	
37	MILD STEEL	
38	FORGED STEEL	
39	BRASS	

CEN-TEX MARINE FABRICATORS, INC.

SMITHVILLE, TEXAS

SPRING ASSIST, QUICK ACTING WATERTIGHT RAISED OVAL HATCH

DWG. NO.: 215-MS