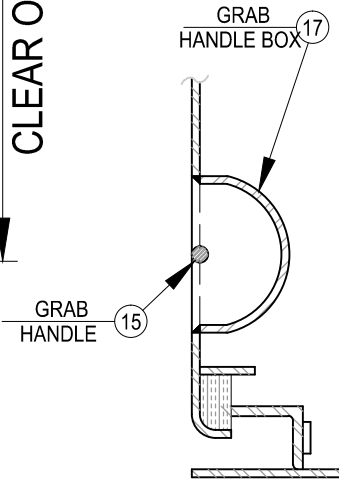


FIG. "A"
CLEAR OPENING
PLAN

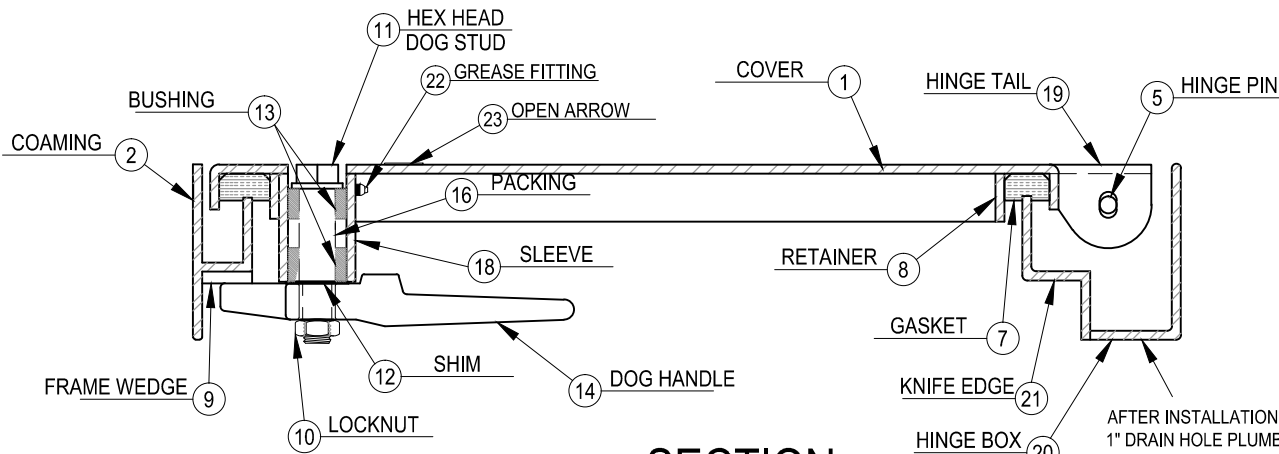
NOTES:

1. AFTER INSTALLATION, A 1" DIAMETER DRAIN HOLE MUST BE INSTALLED AT THE LOW POINT IN THE HINGE BOX AND DRAINED OVERBOARD OR TO A SUMP TO PREVENT CORROSION OR LEAKAGE. (BY OTHERS)

FIG. "B"
CLEAR OPENING



SECTION 'X-X'



SECTION

AFTER INSTALLATION, A 1" DRAIN HOLE PLUMBED OVERBOARD OR SUMP. (BY OTHERS)

SCHEDULE OF MATERIALS

PC.	MATERIAL	REMARKS
1	MILD STEEL	
2	MILD STEEL	
3	MILD STEEL	
4	MILD STEEL	
5	COLD FINISH	
6	STAINLESS	
7	NEOPRENE	
8	MILD STEEL	
9	FORGED STEEL	
10	STAINLESS	
11	BRASS	
12	STAINLESS	
13	DELTRIN	
14	MANGANESE BRZ	
15	MILD STEEL	
16	TEFLON	
17	MILD STEEL	
18	MILD STEEL	
19	MILD STEEL	
20	MILD STEEL	
21	MILD STEEL	
22	PLATED STEEL	
23	STAINLESS	316L ALLOY

CEN-TEX MARINE FABRICATORS, INC.

SMITHVILLE, TEXAS

WATERTIGHT FLUSH HATCH

DWG. NO.: 211-MS